

CD4 Antibody

Cat No.: SJ-AB0729



Applications

Reactive Species

Human

Positive Samples

Refer to Validation Data.

Validated Applications

WB, IHC, ICC/IF, IHF, FC

Recommended Dilution

WB 1:1000-1:2000

IHC 1:100-1:200

ICC/IF 1:50-1:200

IHF 1:50-1:200

FC 1:20-1:100

Product Information

Antibody Type

Recombinant Rabbit mAb

Immunogen

A synthesized peptide derived from human CD4.

Modification

Unmodified

Isotype

Rabbit IgG

Clone No.

N/A

Purification Method

Affinity purification

Form

Liquid

Host

Rabbit

Clonality

Monoclonal

Conjugation

Unconjugated

Concentration

N/A

Storage Buffer

Rabbit IgG in 10mM phosphate buffered saline, pH 7.4, 150mM sodium chloride, 0.05% BSA, 0.02% sodium azide and 50% glycerol.

Storage Conditions

Store at +4°C for short term. Store at -20°C for long term. Avoid freeze/thaw cycle.

Background Information

Function

Integral membrane glycoprotein that plays an essential role in the immune response and serves multiple functions in responses against both external and internal offenses. In T-cells, functions primarily as a coreceptor for MHC class II molecule:peptide complex.

UniProt ID

P01730

Organism

Human

Recommended Name

N/A

Short Name

N/A

Alternative Names

CD4; Leu3; L3T4; Ly4; p55; W3/25;

Gene ID

N/A

Gene Name

N/A

Calculated MW

51 kDa

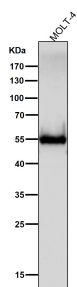
Observed MW

55 kDa

Subcellular Location

N/A

Validation Data



All lanes use the Antibody at 1:2K dilution for 1 hour at room temperature.

NOTICE: For research use only. Not for therapeutic or diagnostic purposes.

Contact

For technical support and original validation data for this product please contact:

T: 400-018-6916

E: support@sanjingbio.com

W: www.sanjingbio.com